



MONTHLY MEMBERSHIP PROGRESS REPORT

District 43 K

Results as of: 04/30/2018

GMT: STEVE ANTON

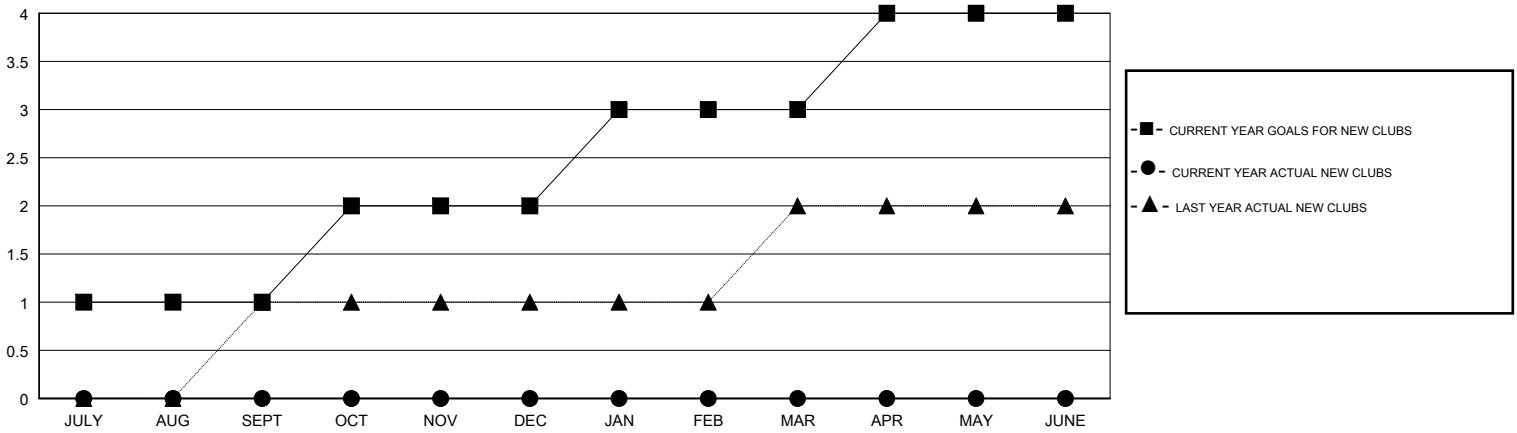
LOCATION KENTUCKY

GMT CA

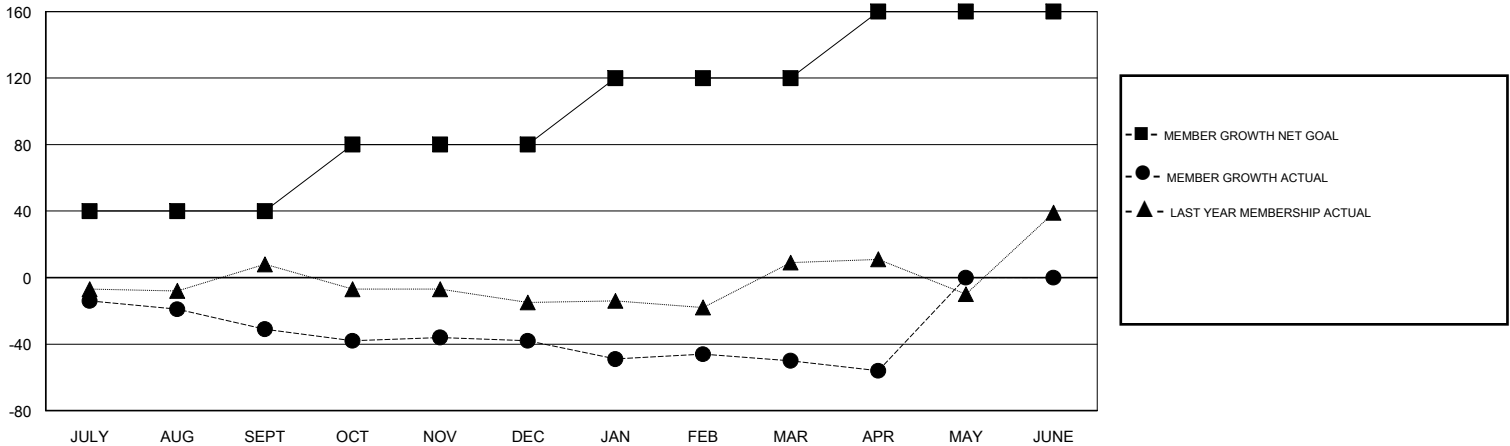
Clubs			
RESULTS FOR 2017-2018			
QUARTER	NEW CLUB GOAL	NEW CLUBS	DROPPED CLUBS
JULY/AUG/SEPT	1	0	0
OCT/NOV/DEC	1	0	0
JAN/FEB/MAR	1	0	0
APR/MAY/JUNE	1	0	1

Members			
RESULTS FOR 2017-2018			
QUARTER	MEMBER GROWTH NET GOAL	MEMBER GROWTH ACTUAL	DROPPED MEMBERS ACTUAL (including transfers)
JULY/AUG/SEPT	40	33	59
OCT/NOV/DEC	40	16	23
JAN/FEB/MAR	40	20	29
APR/MAY/JUNE	40	17	20

GOALS AND ACTUAL NEW CLUBS CUMULATIVE



GOALS AND ACTUAL MEMBERS CUMULATIVE



DROPPED CLUBS: 1

21 CLUBS OF 30 ADDED 1 OR MORE NEW MEMBERS

GENDER DISTRIBUTION	
MALE	631 (62.60%)
FEMALE	377 (37.40%)
Women Percentage Fiscal Year Goal: 40%	

DROPPED MEMBERS	
DECEASED	10
CLUB CANCELLED	0
OTHER	121
TOTAL	131

[CLICK HERE FOR CUMULATIVE MEMBERSHIP DATA](#)

TOTAL FAMILY UNIT MEMBERS	183
FAMILY MEMBERS PAYING HALF DUES	94